

INSIDE THIS ISSUE:

<i>Organization Activities</i>	2
<i>OLOLC Job Fair</i>	3
<i>Grants Awarded</i>	2
<i>Tutoring Hours</i>	4
<i>Volunteer Ops.</i>	5
<i>Suggestion Box</i>	6
<i>Calendar</i>	8



*“Since you cannot do good to all, you are to pay special attention to those who, by the accidents of time, or place, or circumstances, are brought into closer connection with you.”*

**-Augustine of Hippo**  
November 13, 354 -  
August 28, 430:

<http://www.catholic-forum.com/saints/sainta02.htm>

## SGA PHOTO SCAVENGER HUNT: POINT, CLICK, AND WIN

BY JONATHAN PENDARVIS AND KELLEY PATIN

The 2nd annual Scavenger Hunt will take place on November 8-15. Different teams representing different organizations will compete against each other for the grand prize of \$1,000. The runner-up team will receive \$500. The prize money will be split, half going to the participants and the other half going to their Student Organization. Should a team from Arts & Sciences win, they will select an organization to receive half of their prize money. The “Code Blue” Team from LPN won the college’s first Scavenger Hunt last year.

This year’s event will be even better than the first. Registration for teams will begin on November 1st and will end on the 7th. Visit the SGA Office to sign up a team. Several changes have taken place, including a specific copy of rules for the teams. Photos will be taken of specific animals, objects, locations, and people. One upshot of the Hunt is the creativity with which each team meets that goal.

Questions, comments, or concerns, may be addressed to [JonathanPendarvis@ololcollege.edu](mailto:JonathanPendarvis@ololcollege.edu).

### SCAVENGER HUNT RULES AND REGULATIONS

**Teams interested in entering the Scavenger Hunt should read the rules carefully.**

- 📷 There must be a minimum of 2 members per group and a maximum of 4.
- 📷 At least one team member must be in EVERY SINGLE PICTURE taken. NO exceptions!
- 📷 Photos must be turned in on CD. Those in an album or printed out on computer paper will not be accepted.

📷 Additional points will be given for certain pictures provided certain requirements are met for that item. (Ex: Taking a picture with Mike the Tiger is worth more points than taking a picture with an ordinary tiger from the zoo.)

📷 Judges have the final say on whether points will be given on an item. There will be no arguments or discussions about items in question.

📷 50 bonus points will be given to each team that completes an entire section of the list. (Ex: Animals, Sports, Movies, etc.)

📷 No late pictures will be accepted. All photos on CD must be turned into the SGA office no later than 3 P.M. on November 15th.

📷 Last, and most importantly, remember to have fun! This is supposed to be an enjoyable break from studying, homework, and exams!



**Photo Scavenger Hunt**  
STUDENT GOVERNMENT ASSOCIATION

WEDNESDAY NOV. 8TH - WEDNESDAY NOV. 15TH

**1ST PLACE CASH PRIZE \$1000\***  
**2ND PLACE CASH PRIZE \$500\***

\*Each winning team splits the prize with their organization (50/50). (Arts and Science teams pick their organization to split with.)

**NO MORE THAN 4 MEMBERS PER TEAM. LARGE ORGANIZATIONS MAY HAVE MULTIPLE TEAMS**

**REGISTRATION FEE: \$5.00 PER PERSON**

**OFFICIAL RULES:**  
• Registration deadline is Tuesday November 7th  
 • No SGA committee member can compete. SGA Senators, however, may compete on a team  
 • The Scavenger Hunt Committee reserves the right to make the final call on the winners

**VISIT THE SGA OFFICE TO REGISTER.**

## YOU STILL HAVE



## TIME!

You can apply for Financial Aid for the Fall 2006 Semester! Complete the Free Application for Federal Student Aid (FAFSA) online [www.fafsa.ed.gov](http://www.fafsa.ed.gov). Use **031062** for the school code.

If you have been awarded Financial Aid for the Fall 2006 and Spring 2007 semester and plan on attending Summer 2007, but have not requested Aid for Summer 2007, contact the Financial Aid Office at 768-1714.

Interested in Federal Work Study (FWS)? FWS allows a student to work up to 20 hours per week (\$7/Hour) on campus or in a community service agency. Contact the Financial Aid Office for more information.



## STUDENT ORGANIZATIONS KEEPING BUSY WITH ACTIVITIES

## STUDENTS ATTEND PA CONFERENCE

BY SHALANE SHUMAKER, PA STUDENT

The Louisiana Academy of Physician Assistants held their annual conference on October 12-14 in Shreveport, Louisiana. Several PA students were able to attend and represent the Our Lady of the Lake PA program. During the conference, they had the opportunity to meet the PA students from LSUHSC and talk to PAs from various parts of the state. The PA students we also able to attend many seminars concerning topics, such as Motor Vehicle Crashes, Rheumatology, Diabetes, and Asthma. They had a wonderful time and are looking forward to attending the conference next year.

## PTA RAFFLE PAYS OFF

During the Summer semester the PTA (Phi Theta Alpha) Organization had two very successful fundraisers: a Bake Sale in June and a Raffle in July. The Raffle prizes were: First Prize: a glass inlayed Magnolia concrete bench, won by Gisele Menard of Lafayette; Second Prize of \$250 went to Emily Hidalgo, also of Lafayette; Third Prize of \$100 was won by Kimberly Guillot of Plaquemine.

10% of all profits earned from the Bake Sale were donated to the St. Francis Fund. 10% of the profits brought in from the Raffle were donated to the American Heart Association.

## ACHE SPEAKERS AND EVENTS FOR NOVEMBER

**Tuesday, 11/7/06,**

3-4p.m., ACHE Chapter meeting, Location: PTA Annex Building @ Health Science Building.

**Tuesday, 11/14/06,**

3-4p.m., Mr. Robert Davidge, CEO of OLOLRMC will speak on Managing Healthcare Facilities: Its Struggles and Future, St. Peter's Classroom in the Health Science Building.

**Wednesday, 11/29/06,**

11:30 – 12:30 p.m., Julia Hughes, Director of Tulane University's Health Systems Management Graduate program, St. Peter's classroom, Health Science Building.

## CSI-OLOL

BY DR. MICHAEL SILVEIRA, CHAIR, DEPARTMENT OF SCIENCES

Louisiana Board of Regents, Baton Rouge has funded a proposal titled "Project Enhancement of Forensic Science in the Undergraduate Curriculum" submitted under the Board of Regents Support Fund Programs, FY 2005-06. The Forensic Science Program was begun in the Spring of 2004. The principal investigator, Dr. Michael H. Silveira, program director, will use the sum of \$ 25, 000 towards

the purchase of a fourier transform infra- red spectrophotometer.



## ATTENTION FRESHMAN!!!

If you have not submitted **documentation of meningitis vaccine** or a meningitis waiver to the College, you will not be able to register for the Spring semester. Please submit the required documentation to the Health & Safety Office as soon as possible. See the meningitis FAQ's on the college website or call the Health & Safety Office at 768-1755 for more information.

# JOB FAIR JOB FAIR

## FOR OLOL COLLEGE STUDENTS

Graduating students and all students interested in careers in health care

MONDAY, NOVEMBER 13, 2006 1:30-3:30 P.M.

Health Sciences Building  
7443 Picardy Avenue

OVER 40 Health Care Employers/Agencies

Bring your resume and meet employers from Baton Rouge and the surrounding areas **plus** other cities in Louisiana and other states.

### NEWS

#### CONTRIBUTORS WANTED

News from organizations, departments, classes, and instructors is requested.

Information about awards, seminars, updates, and meetings is perfect for the *Latest at the Lake*.

Email news and photos to

[kelley.patin@lolcollege.edu](mailto:kelley.patin@lolcollege.edu)

## OLOL COLLEGE CO-HOSTS FEDERAL CAREER DAY

BY SHARON WALKER, CAREER COUNSELING SPECIALIST

OLOLC co-hosted Federal Career Day, along with LSU, Southern University and Baton Rouge Community College, on Thursday, Oct. 12, 2006. Hundreds of students gathered at the Pete Maravich Assembly Center to talk to recruiters from about 50 federal agencies about job and internship opportunities.



The event was part of the Call To Ser-

vice initiative, a joint project by the Partnership for Public Service and the Office of Personnel Management. The Call To Service initiative is to educate young Americans about opportunities in the federal government. Federal Career Day also featured a series of career-specific workshops which were attended by many students. One student, a biology major, said she attended the Federal Career Day to boost her credentials by applying for

internships before entering the job market. Another student said she attended to get a different perspective on healthcare.

The most popular tables seemed to be for the FBI, NASA, IRS and Public Health Administration.

For more information regarding Federal Careers or Career Plans, contact Sharon Walker, Career Planning Specialist at 768-0813 or [swalkeo2@lolcollege.edu](mailto:swalkeo2@lolcollege.edu)

CALLING ALL KEY CLUB MEMBERS!



**OLOL Student Services is looking for students who were active in Key Club in High School, or involved in Circle K at a previous College or University.**

We would like to find out who you are. If you know anyone else who was active in Key Club or Circle K, ask them to get in touch with us. Please contact the Office of Student Development at 768-1774 or Email [kelley.patin@lolcollege.edu](mailto:kelley.patin@lolcollege.edu)



**OLOL College Tutor****Lab****Fall Hours****Monday—Thursday****8 a.m. - 8p.m.****Friday****8a.m. - 4p.m.****Saturday****11a.m.— 3p.m.****Sunday****1p.m.— 5p.m.****To make an appointment  
for Tutoring, call****Mrs. Gordon at****768-1724****\$\$ GET PAID TO  
TUTOR \$\$****TUTORS ARE NEEDED  
FOR****Statistics****Pharmacology****Chemistry****Trigonometry****Other Classes****For more information  
on becoming a tutor****Contact:****Mrs. Gordon at****768-1724****[sgordo01@ololcollege.edu](mailto:sgordo01@ololcollege.edu)**

## THE NECESSITIES OF MATRICULATION

BY TRAVIS DUDLEY, DEAN OF THE CENTER FOR INFORMATION AND LEARNING

**Study – noun**

1. application of the mind to the acquisition of knowledge, as by reading, investigation, or reflection.
2. the cultivation of a particular branch of learning, science, or art.
3. personal effort to gain knowledge.
4. something studied or to be studied.
5. research or a detailed examination and analysis of a subject, phenomenon, etc.
6. written account of such research, examination, or analysis.
7. well-defined, organized branch of learning or knowledge.
8. the object of such endeavor or effort.
9. the object of such endeavor or effort.
10. deep thought, reverie, or a state of abstraction

Whatever specific usage of the word, study; to study -- is hard work. A predominantly solitary endeavor that requires sustained effort and rigorous self-discipline. Albert Einstein on the subject stated, "Never regard study as a duty, but as the enviable opportunity to know the liberating influence of beauty in the realm of the spirit for your own personal joy and to the community to which your later work belongs."

Einstein speaks of pride, profit, and personal joy, but to most of us the skill of successful study comes with toil and effort. Successful study is a skill, and skills can be learned, improved upon, and made more effective.

The Center for Information and Learning can help you hone the skill of study. There are many learned people who have investigated and researched the process of study, and there is consensus of what works. Check out these books, and more, from the Library – CIL to grow your study skills:

**Becoming a Master Student : Tools, Techniques, Hints, Ideas, Illustrations, Examples, Methods, Procedures, Processes, Skills, Resources, and Suggestions for Success**, by Ellis, David B. call number LB 2343.3 E44

**Essential Study Skills**, by Wong, Linda. call number LB 1049 W66E

**On Course : Strategies for Creating Success in College and in Life : A Guided Journal Approach**, by Downing, Skip. call number LB 2343.3 D69

**How to Study in College**, by Pauk, Walter. call number LB 2395 P3

**Coping With College : a Guide for Academic Success**, by Hamachek, Alice L. call number LB 2343.3 H36

**College Learning and Study Skills**, by Longman, Debbie Guice. call number LB 2395 L58





**Caroline Adams**



**Shawn Aguillard**



**Candyce Batton**



**Lauren Buxton**



**Kimberly Jarreau**



**Ellen O'Keefe**

## OLOLC WELCOMES SIX NEW STUDENT AMBASSADORS

BY KELLEY PATIN, STUDENT DEVELOPMENT SPECIALIST

Our Lady of the Lake College is pleased to announce the names of the new Student Ambassadors. Caroline Adams, Shawn Aguillard, Candyce Batton, Lauren Buxton, Kimberly Jarreau, and Ellen O'Keefe were selected to represent OLOLC this semester.

Student Ambassadors serve as official hosts and ambassadors for a number of campus events such as Presidential functions, Board of Trustees' meetings, Quarterly Campus Masses, lectures, career

fairs, visitation activities, and banquets.

In 2006 the number of Student Ambassadors was set at 20, with each receiving a scholarship of \$300 per semester. Student Ambassador responsibilities vary throughout the academic year. Monthly scheduling meetings are 1 – 2 hours, and hours worked range from none to 6 per week, with the average being 1-2 hours per week. Ambassadors are expected to work a total of 30 hours each semester.

Selection to Student Ambassadors is one of the highest honors a student can receive at Our Lady of the Lake College. Membership in this prestigious group reflects dedication to serving the college, leadership, and academic excellence.

Spring 2007 Applications for Student Ambassadors will be mailed to qualifying students in late December. For more information, call Kelley Patin at 768-1774.

## VOLUNTEER OPPORTUNITIES



HOPE *worldwide*-Gulf Coast is proud to announce its after-school program at Magnolia Woods Elementary. The program, named Operation Safe Place, focuses on strengthening math and reading skills in Kindergarten – 5th grade students. Daily cultural arts, athletics, music, and scheduled field trips will help to develop academic excellence. Health Education and job readiness services are extended to the families of the students.

Volunteers are needed to serve in a number of capacities. To learn more about the organi-

zation view the website [www.hopeww.org](http://www.hopeww.org). For more information on volunteering contact Frank Dowd at 225-228-6662 or via email at [frank\\_dowd@hopeww.org](mailto:frank_dowd@hopeww.org).



Help Catholic Community Services Raise Adoption Awareness by donating your gently used items to **Here Today, Gone Tomorrow**, a local thrift store. The funds raised from the sale of donated items are given to local non-profit groups. Gather up your *gently used items*, mark the bags/boxes with **APOP at CCS #651**, and bring bags, boxes, furniture,

etc. to:

**Here Today  
Gone Tomorrow  
10240 Burbank Drive  
(between Gardere &  
Bluebonnet)  
225-769-2259**

Donations to be used for birth mother outreach. Contact Samantha Clarke, Adoptions Social Worker, 225- 339-8708, or [sclarke@ccsbr.org](mailto:sclarke@ccsbr.org) for more information.

## PLEASE NOTE

◆ While the Administration is committed to responding to all suggestions received, we would like to remind individuals submitting suggestions to demonstrate civility, respect and understanding, all of which are consistent with our Mission and core values. Offensive language and name-calling are unnecessary in civil communication and discourse.

◆ Campus Administrators respond to suggestions as appropriate to their area of responsibility.

◆ All members of the campus community are invited to offer suggestions for improved customer service and satisfaction at OLOL College.



You may access the Suggestion Box through the [OLOLCollege.edu](http://OLOLCollege.edu) homepage

## ONLINE SUGGESTION BOX RESPONSES SEPTEMBER 21-OCTOBER 20, 2006

**Request for Virtual Tour on Website:** Currently the College is making a significant effort to redesign and rebuild its entire website. The technology department is outlining all buildings and labeling all classrooms with their names.



**Request for Wireless Internet:** Wireless has been installed in HCI, Library, and Health Science Building. The College is working on getting wireless connection in the remaining areas.

**Surgical Technology Bulletin Board located in the Nursing Building:** The SGA has indicated that the Surgical Tech bulletin board can be relocated by the Surg Tech students to the Health Sciences Building.

**Scheduling of Weekend Clinicals in Nursing:** Your suggestion regarding rotation of students through weekend clinicals is being forwarded to the ASN faculty so that it can be incorporated in future planning. You might also want to contact your future instructors to let them know of this suggestion as well.

**Team Teaching in Nursing:** While your suggestion indicates that you know of no one who supports team teaching, the Undergraduate School of Nursing has received many positive

comments on this topic. Team teaching has been implemented in the ASN program to facilitate consistency among sections of the nursing courses. Any concerns about an individual course need to be addressed with the course faculty. If your concerns cannot be resolved in this manner, you may contact the ASN Program Director, Jennifer Beck, for further assistance.

**Accelerated Nursing Program in Baton Rouge Needed:** (two suggestions) Thank you for your interest in this program. It is the plan of the Undergraduate School of Nursing to offer the accelerated ASN option on its Baton Rouge campus; however, the exact start date is not currently set. When that date is available, we will advertise it on the college website and other venues. Until then, you may email Ms. Keeley Dupuy, Department Chair for Outreach Programs, to indicate your interest in this program ([kharmon@ololcollege.edu](mailto:kharmon@ololcollege.edu))

**Nurses Need to Respond Faster:** We believe this suggestion was made by an individual intending to offer a suggestion to the OLOL Medical Center. However, it may be intended for students in nursing. Obviously, a

huge part of customer/patient satisfaction is response time.

**Request for Online Calendar on the Main Page of the Website:** In an effort to keep the main page less cluttered, the academic calendar is a "quick link" from the home page.

**Request for Child Care on Campus:** Providing quality child care is a highly regulated endeavor. We do not anticipate moving in this direction in the near future.

**Request for Fitness Gym as a College Facility:** As you pointed out in your suggestion, membership is currently available to students in the OLOLRMC health and fitness facility at the reduced employee fee. Although providing a college dedicated fitness facility is not a goal that can be achieved immediately, it may be considered at a future date, after the goal of having a student center is achieved.

**Request for Athletic Department:** Our Lady of the Lake College has no plans to initiate college athletics. However, if there are students who are interested in participating in recreational sports as a college-sponsored team, you are encouraged to address this through the Student Government Association.

**Daily Devotionals:** The suggestion for short and sweet devotionals that can be retained in



## ONLINE SUGGESTION BOX RESPONSES SEPTEMBER 21-OCTOBER 20, 2006

memory throughout the day has been implemented on at least an alternating basis. Thank you for your suggestion.

**Admissions Office:** Commitment to customer service is of high priority. Your suggestion has been shared with the personnel in the Admissions office. Your questions are important and non-responsiveness to phone calls is unacceptable. We have examined our return call procedures and trust this will no longer be a problem.

**Admissions Office Personnel:** As noted above, commitment to customer service is of high priority. The situation presented in the suggestion has been discussed with the individual involved. Each and every prospective and currently enrolled student is important to us. It is hoped that your decision making will not be negatively influenced by one bad experience. "Attitude" and rudeness are unacceptable.

**Parking:** Parking spaces behind the nursing building are monitored by Tracer. Cars without college parking tags are ticketed or towed. The large parking lot on Hennessey, between Didesse and Dijon, is shared by the college and the hospital and is, therefore, not restricted or monitored by Tracer. There is a gravel lot at the end of Hennessey, on the right, that is for

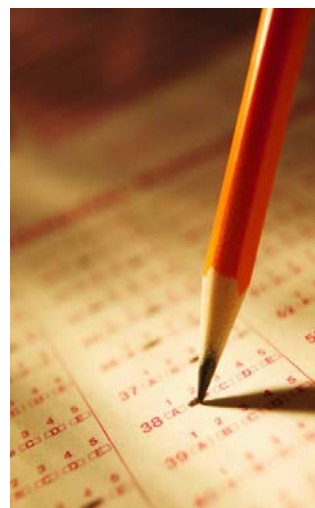
overflow parking for the hospital and college.

**Parking Across from the Arts and Sciences Buildings on Brittany (two suggestions):** The owners of the grassy lot have prohibited parking. We continue to address the parking issues with no easy solutions in sight.

**Street Light Needed Between the Nursing Building and Hennessey for Clinical Students Arriving at 6:00 AM:** We are requesting that Plant Services address this need. In the meantime, please try to park your car in a well-lighted area and try to walk with other students or employees who are arriving at the same time.

**Use of Social Security Numbers as College ID:** Our long-term plan is to replace the SSN as the College ID with a system generated ID number with the implementation of the new student information system that will also provide students access to online services. Since receiving your suggestion, the enrollment services managers have met twice to address removal of unnecessary SSN numbers from all documents. In addition, the Library will also refrain from using the SSN number to identify students. We are currently drafting policies and procedures to address social security number protection.

**Interest in Sonography Program:** The College considered offering a Diagnostic Medical Sonography Program several years ago (2000). After developing a proposal and conducting a feasibility study, the decision was made by administration to defer further development due to the cost of sponsoring the DMS program for such a small number of enrolled students.



### STUDENT OPINION SURVEYS-ARE THEY WORTH MY TIME?

BY  
VALERIE ADAMS,  
RESEARCH ASSOCIATE

It's that time of the semester again! The time when you get to let all the Instructors, Deans, Vice Presidents, and Dr. Harper know what you think of each of your classes. "How?" you ask. Just by filling out the student opinion surveys for each class.

By providing the most honest feed back possible you help improve each class that you take. Each survey is evaluated and processed, and yes, each instructor is even given a 'grade' based on the information you provide. So please take the time to fill out the surveys in pencil and turn them back in.

### ACT 1

#### Workshops

November  
4 & 11, 2006

#### TEST DATE

November  
18, 2006  
9am-Noon

Arrive @ 8:30 AM

WORKSHOPS AND TEST  
WILL TAKE PLACE IN THE  
ST. LUCY ROOM OF THE  
HEALTH SCIENCE

BUILDING @  
7443 Picardy, B.R., La.  
70808

Call 768-1724 for more  
info!

The Latest At The Lake

Address Reader Comments or  
Concerns to Kelley Patin, Student  
Development Specialist

Phone: 225-768-1774  
Fax: 225-768-1945  
E-mail: [kelley.patin@lolcollege.edu](mailto:kelley.patin@lolcollege.edu)

*We're on the Web!*  
Visit us at:  
[www.ololcollege.edu](http://www.ololcollege.edu)



**Publisher**  
Dr. Phyllis Simpson,  
Dean of Student Services

**Editor**  
Kelley Patin  
Student Development  
Specialist

# November 2006

Sun	Mon	Tue	Wed	Thu	Fri	Sat
			1	2	3	4
5	6	7 ACHE Meeting 3-4 in the PTA Foyer	8 SGA Photo Scavenger Hunt Begins 	9	10	11
12	13 OLOL Job Fair 1:30-3:30 Health Science Bldg	14 ACHE Speaking Event 3-4 Robert Davidge St. Peter	15 SGA Photo Scavenger Hunt	16	17	18
19	20	21	22	23 Thanksgiving Holiday OLOL College Closed	24	25 
26	27	28	29 ACHE Speaking Event Julia Hines 11:30-12:30 St. Peter	30		