



LOL Nursing Students Jennifer and Thomas Bickham deliver their baby at home during Hurricane Gustav

CENTRAL, LA (WAFB) - Little Audrey Bickham's parents are calling her a miracle. The baby was born during Hurricane Gustav. As heavy winds and rain pounded our area, the Bickhams braced themselves for an unexpected home birth, after being turned down by local ambulances that simply could not get to her.

As Gustav unleashed its wrath by knocking down power lines, trees, and fences, one family in Central dealt with its own turbulence. "She keeps progressing. It's like, I don't know if we're gonna make it." Thomas Bickham nervously sat by and watched as his wife gave birth to their baby during the height of the storm. "I was a little scared because in the back of your head, you always think, 'Oh my gosh, what if something goes wrong?'" says Jennifer Bickham.

With winds above 50 miles per hour lashing through the area, neither ambulances nor local firefighters could get to the Bickhams. So, the pair, along with Jennifer's mother and sister, made a home delivery. "I told him, I was like, 'I don't want to have my baby at home.' But you gotta do what you gotta do," Jennifer says. The family says it had quite a few frightening moments. The baby girl silently arrived with no crying or screaming. It turns out that Audrey was asleep. "My mom caught her and she rubbed her face and then she cried. Then, I was like, 'Okay I can exhale now.'" Once Gustav passed through, firefighters from Central were able to check out the newborn and her mom. They did eventually make it to the hospital. "Our room was dark.

We didn't have hot water. You're like, 'Oh yes, we get to go to the hospital,' then you're like, 'It was better at home.'" The Bickhams say their home is now complete, with a new seven-pound addition to the family.

It turns out that both the mom and dad are currently in nursing school. Also, Jennifer Bickham's mother, who delivered the baby, is also studying to become a nurse.

"I told him, I was like, 'I don't want to have my baby at home.' But you gotta do what you gotta do," Jennifer says.

My mom caught her and she rubbed her face and then she cried. Then, I was like, 'Okay I can exhale now.'"

Courtesy of WAFB, Channel 9 Sept 9 and Sept 12, 2008

Submitted By: Mary Pat Thevenot, Pediatric Nursing Instructor

Inside this issue:

Therapeutic Massage Students	2
PTA Recycles Shoes	3
PTA "Baby" lab	3
National PTA month	4
Habitat for Humanity huge success	5
QEP focuses on writing	6
Comm. Outreach Project St. Vincent De Paul	6
Library News You Can Use	7
Student Services	8
For Brags	9
Franciscan FUNDamentals	10
Calendar	11



Bickham Family
LOL students, Mom, Jennifer Bickham and Dad, Thomas Bickham admiring baby



Little Miracle....Audrey Bickham

Therapeutic Massage Students lend a “hand” after Hurricane Gustav

More than one week after Gustav blew through Baton Rouge the Government Office of Homeland Security and Emergency Preparedness (GOHSEP) continued to be staffed 24/7. Many of the individuals present had been there long before the storm hit, leaving only for a brief nap or to check on their own families. The Office of Emergency Preparedness called Becki Giuliante, the Director of the Therapeutic Massage program to request assistance for the volunteer and state officials manning the OEP offices during and after Gustav. On September 10th and 11th, Robin Myers, instructor in the Therapeutic Massage program at the HCI and 4 HCI students, knocked on their door ready to help. Robin and the students were not there to volunteer to pick up debris, serve meals, turn on anyone's electricity or to deliver aide to the needy storm survivors, but rather to provide massages to the OEP staff who were ensuring that all those other task were done.

For almost 4 years now Robin has been teaching technique classes in massage therapy for the Health Career Institute. Robin is the Louisiana Director of Emergency Response Massage International (ERMI). She and the students were there to offer free therapeutic

massages to emergency first responders and city officials.

The students trained at the school in appropriate onsite chair massage following protocols for working on first and second responders in times of disasters. The massages last about 10 minutes and are

The massages last about 10 minutes and are intended more to revitalize than “break down the muscle” as a deep tissue massage might

intended more to revitalize than “break down the muscle” as a deep tissue massage might. Native American flute music and a bottle of aromatherapy spray add to the relaxing atmosphere.

On Wednesday and Thursday, Robin and the students worked from 5pm-9pm on these exhausted and stressed individuals. This was an extraordinary experience for the students. Lola Swenty, Tammy Miller, Rose Sheppard, Paloma Sanders, Robin and two other volunteers touched over 85 individuals over a two evening period

Robin states, “we addressed a significant need, and the students, Lola, Tammy, Rose and Paloma, were stellar in their professionalism, compassion, and attention to the special circumstances and needs for this population. In my 13 year teaching career, there are few

classes of students who could have met this challenge with such grace and talent. It was a true privilege to get to work with these women in this setting.”

The HCI continues to stay involved in the community of Complementary Therapy. Marie Kelley, RN, VP Career Training was recently appointed by Governor Bobby Jindal to the Louisiana State Board of Massage Therapy. Therapeutic massage students will be attending the Baton Rouge Community College Health Fair later this month providing chair massage to participants and recruiting for the HCI.

Watch your emails for massage clinics at the HCI over the next 2 months.

Submitted by:
Marie N. Kelley, RN, MNSc.
VP Career Training



Student, Tammy Miller offers a revitalizing massage



Students, Rose Sheppard and Tammy Miller, lending a helping hand or two!



Student, Lola Swenty uses a little muscle to help relieve tired and achy muscles



Recycle Shoe Community Service Project 2008 OLOL College Phi Theta Alpha

The PTA Class of 2009 participated in the Nike "Recycle a Shoe" program at OLOL this summer. Approximately 70 pairs of shoes were donated by the OLOL community over a four week period. Shoes were stored in the St. Gabriel and Administration lobbies. When Phi Theta Alpha Advisor, Mrs. Leah Geheber, said, "enough of smelly gym shoes!" we gathered the donated footwear and President Joseph DiSandro called Mr. Larry Galloway to pick up the heavy load. Christian Life Church welcomed the pungent

odor and was most appreciative of the 7 bags of shoes. Those shoes donated in good condition will go to needy individuals. The soles will be removed from the footwear that is excessively tattered to reuse and will be ground up into playground surfacing! Special thanks go to White Castle High School for their special donation.

Submitted by Kelli Kirkland SPTA, MS (SGA Representative)



Phi Theta Alpha/ Our Lady of Lake College Baby Lab Summer 2008

This year as part of the curriculum of the Physical Therapist Assistant program, BABIES invaded our campus on July 8, 2008! Infants from 6 months old to toddlers at 22 months were part of the PTA Clinical Science Laboratory. They were crawling, running, rolling, throwing balls, and just being babies. When the parents were asked for their little ones to come to our class, they were quite suspicious. After experiencing the PTA lab, Moms and teachers were at ease and even shared a few laughs among the chaos which is termed "play". Part of the role of the PTA is to understand normal and abnormal human stages of development. When a 6 month old is prescribed physical therapy services,



Pictured above is Leah Gehber, PTA instructor and one of the baby participants.

it is of utmost importance to determine at which stage certain behaviors develop. For example, a baby will sit unsupported normally around 6 months. By 21 months, a toddler is normally able to hop on one foot and climb stairs without assistance.

At the end of the "Baby Lab", each participant was given a certificate of appreciation and an age appropriate gift (thanks to our coordinators Mrs. Leah Geheber and Mrs. Kitty Krieg). As far as the PTA OLOL class of 2009, we received the best gift of all, hours of magnificent SMILES.

Submitted by
Kelli Kirkland, SPTA, MS

Luke 18: 16 "But Jesus called the CHILDREN to Him and said, "let the little children come to me, and do not hinder them for the Kingdom of God belongs to such as these."



Pictured Left: Cori O'Brien observes her little patient



National Physical Therapy Month

October 2008

Phi Theta Alpha

In celebration of Physical Therapy month, OLOLC PTA students sold approximately 360 jambalaya dinners. A portion of the proceeds will be donated to help the family of a surviving three year old who recently drowned. This weekend, October 18th and 19th, members of Phi Theta Alpha will participate in two separate events. Students will volunteer for the Alzheimer's Walk to Remember. In addition, PTA students will assist members of the Baton Rouge District of the American Physical Therapy Association this Sunday to perform a "Falls Risk" screening at the First Baptist Deaf Church in Baton Rouge.

Submitted by: Kelli Kirkland SPTA, MS (SGA Representative)



Vicki Eshpeter and
Cori O'Brien

PTA Class of 2009



PTA Class members include:

Allyson Abshire, Chris Arnold, Shelley Barry, Lauren Bienvenu, Devin Blanchard, Joe DiSandro, Vicki Eshpeter, Jamee Furman, Kelli Kirkland, Anita LaBauve, Lyndsay Lobell, Mary Mai, Tiffany Major, Heather Monroe, Kim Moody, Cori O'Brien, Thais Perry, Justin Reynolds, Tiffany Sargent, Brian Stout, Kayla Whetstone, Tiffany Wiggins, and Sarah Wisner.

OLOL College Phi Theta Alpha Summer 2008



The Louisiana Physical Therapy Association (LPTA) held its quarterly Baton Rouge District Meeting at the OLOL St. Gabriel classroom July 8, 2008. After a terrible rainstorm and some local flooding near the Essen/Perkins area, nine brave souls managed to attend this meeting. Speaker, David Tatman our LPTA lobbyist, gave us a brief, detailed overview of the importance of voting, how bills are passed, what not to buy a **legislator** for lunch, and encouraged us to become proactive with our local government. He gave us simple case scenarios of how to build a relationship with our leaders by simple contact on the issues concerning physical therapy. Mr. Tatman encouraged us to inform our legislators of interests in physical therapy. He also said this would help the legislators on how to vote on certain bills. It was decided that the chapter would present screening for falls in the elderly at two churches in Baton Rouge during October for PT Month.

Those in attendance include a SPT from a Florida School, former graduate of OLOL, Ms. Jaime Landry, PTA, Kelli Kirkland SPTA, Leah Geheber, PT, and Baton Rouge District Chair, Kitty Krieg, PT and therapists from BRGMC, BRPT Lake, and Earl K. Long.

Increasing Spiritual Wellness Weekly Prayer Meeting Summer 2008 OLOL College Phi Theta Alpha



Members of the PTA Class of 2009 participated in a weekly Scripture Reading and Prayer meetings this summer. Thursdays in July at 7:30 AM, prior to Mrs. Leah Gehebers' Human Development class, a group of students met to focus on the Spiritual needs of our class, instructors, families, and Nation. This weekly exercise was a much needed Spiritual jolt to our already stressed physical bodies considering the demands of the PTA summer schedule. Special thanks to Mrs. Anita LaBauve, student member, and group leader, for keeping us Spiritually challenged all semester and providing the prayer box on our bulletin board!

Submitted by Kelli Kirkland SPTA, MS (SGA Representative) August 15, 2008.

SGA and Student Ambassador Habitat for Humanity Project – Huge Success!

At 7:45 AM on September 20, 2008, SGA Officers and Senators, Student Ambassadors, Students and Faculty Members began a work-day that will never be forgotten.

The project involved a Community Build in North Baton Rouge for the National Habitat for Humanity Project. Because this was the first day of building on the slab, all of the representatives from Our Lady of the Lake College were able to participate in the “Blessing for the Build” that morning. After the prayer, the proud new homeowner, Wendy Mann, was allowed to drive the first nail into the foundation. What followed for the

rest of the day was an unforgettable experience for all involved. Working through the hot sun, the cooling rain, and the never-ending mudslides at



“The Crew”

the site proved to be very hard work but totally gratifying at the end of the day. As the entire exterior

walls of the home were “raised”, great shouts of joy and enthusiasm could be heard up and down Cypress Glenn Avenue. Some of the students at the project had their very first experience with plain old ham-

mers and nails – and learned for the first time about “t’s” and “shims”. Special “musical entertainment” was provided at the end of the day, too. President Harper and Denise Crowe sang snippets from the old tune, “If I Had a Hammer”, as the students were packing away the tools and carpenter aprons!

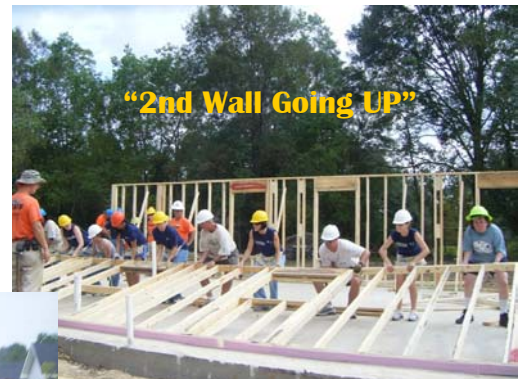
Giving back to the Community as a part of our Mission and the “Commitment to Service” from our Centennial Compass continues to become a stronger and more vibrant component of Our Lady of the Lake College every academic year.

Submitted By:
 Dr. Phyllis L. Simpson
 Dean, Student Services
 Director of Counseling Services
 SGA Advisor



“Hard At Work”

**It’s all in
 a Day’s Work!!**



“2nd Wall Going UP”



SGA...Pose for the camera “Now Click”



“Simpson Proud!!!”



Quality Enhancement Plan Focuses on Writing

Our Lady of the Lake College is pleased to announce that work is in progress on a Quality Enhancement Plan (QEP) to improve student learning. The focus of the QEP will be on improving students' writing skills throughout their careers at the College.

Our regional accrediting agency, the Southern Association of Colleges and Schools, requires all colleges and universities to develop a QEP during reaccreditation, which is a process we all go through every ten years. The QEP topic for OLOLC was chosen via a collaborative process involving students and faculty, and a diverse team of OLOLC faculty and staff is working with an alumnus and an SGA representative to hammer out the details of the plan.

You can expect to see an increased focus on writing beginning in Spring 2009 as we begin to implement this Quality Enhancement Plan. The plan has two major emphases: writing to learn and learning to write. Writing to learn emphasizes the use of (mostly brief, informal) writing activities to enhance comprehension and retention of course content. Learning to write, on the other hand, emphasizes the development of writing skills for formal writing assignments.

The QEP will gather momentum over the next few years. Our goal is to graduate students with exceptional writing ability.

Submitted By:
Angus Woodward
Assistant Professor of English
QEP Team member

*THE RADIOLOGIC TECHNOLOGY FACULTY
IS REQUESTING DONATIONS FOR THE
AMERICAN CANCER SOCIETY FOR
BREAST CANCER RESEARCH!*



WHEN: THE MONTH OF OCTOBER

**WHERE: YOUR BUILDING (WE WILL
COME TO YOU)**

*A pink balloon will be tied to every
door of those who donate! Other
gifts given for larger donations.*

Community Outreach Service Project Lunch at the St. Vincent DePaul Dining Room

Suzanne Carpenter, Faculty Advisor to the Franciscan Student Fellowship of Our Lady of the Lake College would like to thank Candi McElheny, Dr. Phyllis Simpson, Desley Washington, Dr. Albert Swafford, and Rad Tech Students Tracy Reeves, Aly Adams, and Aimee Aguillard for being a part of the student organization's community outreach service project serving lunch at the St. Vincent DePaul Dining Room on May 27, 2008.



Library News You Can Use

Come see the New Library Commons

The new Library Commons building is open! Cake and punch

were served at the dedication and ribbon cutting ceremony September 11th, with representatives from the student body, SGA, the library, the hospital, and administration. Brand new computer labs are now available, as well as lots of extra comfortable study



*Ribbon cutting and dedication ceremony at the Library Commons, September 11th, 2008.

rooms and café seating where you can set up your laptop, browse the maga-

zine rack or enjoy a healthy snack from our Yo-Naturals vending machine. Keep your eyes and ears open in the future as plans are in the works for lunch and coffee ser-

vices! Come by and see us at 5339 Didesse Dr., right next to the Main Library.

The OLOL College Open House will be held at the Library Commons Saturday, October 25th, beginning at 9am. Lunch will be served at 12:30 – come get some jambalaya!

Submitted by:

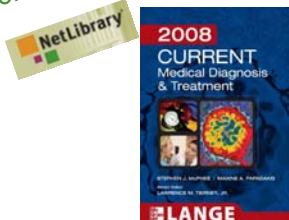
Travis Dudley
Dean, College Library

*** To access the NetLibrary book collection:**

1. If you are on campus you do not have to log in. Go to the College Library homepage and click on "Electronic Books." From here you can search our eBook collection (through NetLibrary).
2. To access from off-campus, you will need to create a free account. This account must be created from on campus. To create the account:
 - Click on "Electronic Books" from the College Library homepage.
 - Click on "Create a Free Account" in the upper right hand corner.
 - Once you have done this, you can access from off campus.
3. If you have any questions, call the library and ask for help!
 - Phone: 225-768-1730
 - Email: library@ololcollege.edu

Submitted By:
Travis Dudley
Dean, College Library

eBook of the Month!



Our Lady of the Lake College e book Collection

Current Medical Diagnosis & Treatment, 2008. **McGraw-Hill Professional; 47th ed.**

by McPhee, Steven J.; Papadakis, Maxine A.; Tierney, Lawrence M.

In this text, you'll find current insights into symptoms, signs, epidemiology, etiology, and treatment for over 1,000 diseases and disorders. Turn to any topic, and you'll find on-the-spot answers to your questions for both hospital and ambulatory medicine. This streamlined, authoritative reference gets you up-to-speed fast on the latest medical advances, prevention strategies, cost-effective treatments, and more.

- Comprehensive coverage of inpatient and outpatient care, highlighting only the diagnostic and treatment tools pertinent to your practice
- A-to-Z overview of internal medicine and primary care topics from gynecology and neurology to toxicology and urology
- Only text with an annual HIV infection update
- "Essentials of Diagnosis" for most diseases/disorders
- Hundreds of drug treatment tables, with indexed trade names and updated prices-plus helpful diagnostic and treatment algorithms
- Recent references with PMID numbers for fast access to abstracts or full-text articles

Evidence-based standards for 1,000+ diseases and disorders

New to this edition:

- New 8-page color insert
- Extensively revised chapters on Ear, Nose and Throat; Hypertension; Disorders of the Blood Vessels and Lymphatics; and Protozoal and Helminthic Diseases
- Updated chapter on preventive medicine emphasizes disease prevention and health promotion
- Revamped cancer chapter delivers the very latest treatment advances

Student Services

South Louisiana Leadership

Saturday, October 18, 2008

9am - 4pm

Held at Our Lady of the Lake College
Health Career Institute
5220 Essen Lane Baton Rouge, LA

This will be an excellent opportunity for students to do some networking with other College's Student Government Associations and faculty members, as well as gaining knowledge in Student Leadership.

We are flying in 2 presenters to come out and give us a jam packed day that will be lots of fun. OLOLC SGA has brought in Tarant and Wymer Consulting 3 times and flown to Chicago for one of their Anticonferences.

Beta Sigma Mu Invitation

Are you a Human Medicine Major?

Want to meet others interested in medicine and serve your community at the same time?

If so, join Beta Sigma Mu
next meeting Thursday, October 23
at 5pm in the Science building.

Bake Sale:

The Student Ambassadors will be having a Bake Sale on October 24, 2008, from 11:00 A.M. to 1:00 P.M. The Bake Sale will be between the Health Science Building and the Health Science Annex.

Please come out and support the Student Ambassadors, and buy some goodies!



TUTOR SERVICES

OLOL College

5414 Brittany Dr.

Baton Rouge, LA 70808

225-490-1620



FREE tutoring available to ALL OLOL College Students

Tutors Available by APPOINTMENT Monday – Sunday

Subjects vary from Biology, Chemistry, English, Math

PLEASE NOTE:

Space and time slots are limited!!!!

Anyone interested please obtain and complete a Request for Tutoring Contract from Student Services

For additional information please contact

Cassandra Claiborne

225-490-1620

TOBACCO-FREE LIVING JEOPARDY JAM CONTEST

Everyone is invited to come and compete in the Tobacco-Free Living Jeopardy Jam Contest. The contest is set for November 7, from 12 to 2 in the St. Michael Classroom. Please come and join us; prizes AND food will be given away!

The Jeopardy Jam Questions will be focused on such topics as: types of tobacco, health risks, quitting, current stats, tobacco industry, secondhand smoke, social smoking and pop culture. **YOU WILL NOT WANT TO MISS OUT ON THE GREAT PRIZES!!!**

If you need any more information, please email Kati Cashio, the TFL Student Coordinator, at katicashio@ololcollege.edu

For Brags



The Nurse Anesthesia Program

is rocking with rewards:



We had two students awarded with scholarships from the AANA and were recognized at the AANA national convention in Minneapolis, MN in August. These students are: Marlo Constantino, Class of 2009 (December), received the JSM scholarship, and Brian Badeaux, Class of 2008 (December), received the Maria Roach, CRNA scholarship. Congratulations to these students!

Also, we have three graduating Senior students that were selected to present at the state LANA meeting held in New Orleans, LA on October 5th. These students were Natalie Angelle, Melanie Daigle, and Trish Guil- lot. They gave their presentation on rapid sequence induction and it was fantastic. Many of the CRNA's perceived that they were practicing CRNA's already. Many couldn't believe that they were students. Way to go Natalie, Melanie, and Trish!!

Last but not least, at the same LANA meeting, Brian Badeaux, graduating Senior, was named LANA Outstanding Student of the Year and was rewarded with a plaque and \$500. We are extremely proud of all our students!!

Submitted By:

Desley M. Washington, MSN, RN

Instructor, School of Nursing

Please join us in congratulating Dr. Barbara Chauvin

Dr. Barbara Chauvin, Academic Counselor for the Metropolitan New Orleans Center of the School of Nursing, will make a scholarly presentation at the upcoming N-OADN (National Organization for Associate Degree Nursing) Conference in Myrtle Beach, SC next month. Please join us in congratulating her as she represents Our Lady of the Lake College at this national event!



Emily Boyette was a recipient of the Women's Advisory Council's (for St. Elizabeth Hospital) scholarship on August 22, 2008. Emily is currently enrolled in the ASN program.

Congratulations to Dr. Jane Savage

Congratulations to Dr. Jane Savage, Metropolitan New Orleans Center Director. She and her colleagues were recently notified that their article entitled **Perinatal Nursing in Uncertain Times: The Katrina Effect** was selected as the **2008 MCN (Maternal Child Nursing) Research Paper of the Year.**



Congratulations to A.S.N. student

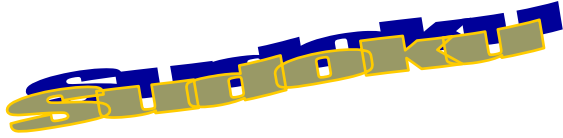
Susan Indest

Susan has been selected as a columnist for the NSNA Magazine "Imprint".

Her first "Happenings" column will appear in the November/December issue. Her introduction/profile is in the September/October issue, and online it is located at:

http://www.nsna.org/pubs/hap_rep.asp

Franciscan FUNdamentals



3 6 4	7 8 9 4	2 6
5 7 2 3 8		3 8 6 7 5
2 9	3 8 7 2	3 4 8

JOB FAIR JOB FAIR

**MARK THIS VERY IMPORTANT DATE
ON YOUR CALENDER**

FRIDAY, OCTOBER 24, 2008

1:00-3:00 p.m.

Arts, Sciences and Health Professions Building (7443 Picardy Ave.)

LOOK FOR LIST OF EMPLOYERS VIA YOUR
E-MAIL ACCOUNTS

Sharon Walker, LPC, NCC, MCC

Career Planning Specialist

768-0813

Swalke02@ololcollege.edu

OUR LADY OF THE LAKE COLLEGE

Address Reader Comments or Concerns
to Karen Goodridge
Phone: 225-768-1774
Fax: 225-490-1613
E-mail: Karen.Goodgridge@ololcollege.edu

We're on the Web!

Visit us at:
www.ololcollege.edu

Disclaimer: This newsletter is published by the Student Services Department but does not necessarily express the opinions of those of the College, Board of Trustees, Administration, Faculty, Staff, Alumni, or the Student Body

POLICIES AND PROCEDURES

The Latest at the Lake has been the official publication of Our Lady of the Lake College since May 8, 2003. It is published monthly during the regular semesters through the Office of Student Services.

Submissions must include the author's full name and phone number. Phone numbers are not published. Photo returns are NOT guaranteed. Faculty and staff members should include their title and department. Space is reserved (with a 150 word limit per item) for recognized student organizations. Such submissions should include the name of the organization.

The Latest at the Lake publications are designated public forums. Views expressed therein are those of the author or, if unsigned, those of the publication staff and should not be interpreted as the views of others.

Newsletter Staff

Publisher

Dr. Phyllis Simpson,
Dean of Student Services

Editors

Karen Goodridge
Student Development Specialist

Layout & Design

Cassandra Claiborne
Administrative Assistant,
Student Services

October 2008

Sun	Mon	Tue	Wed	Thu	Fri	Sat
			1	2	3	4
5	6	7	8	9	10	11
12	13	14	15	16 SGA Forum	17	18 SGA Student Leadership Conference
19	20	21	22	23	24 Job Fair	25 Open House
26	27	28	29	30	31	