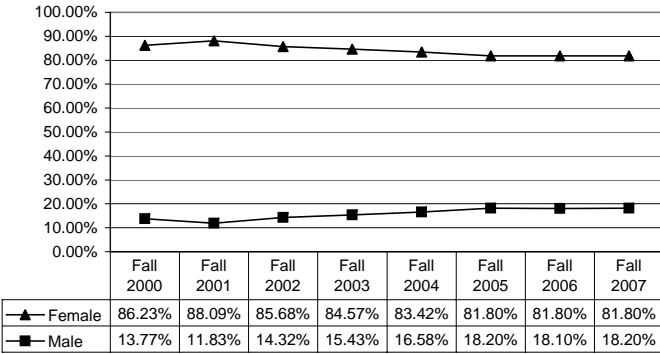
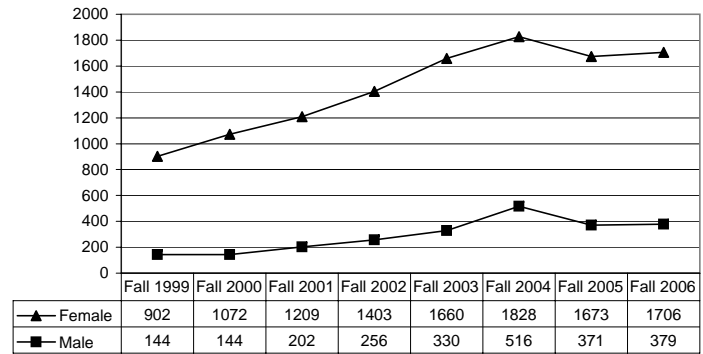


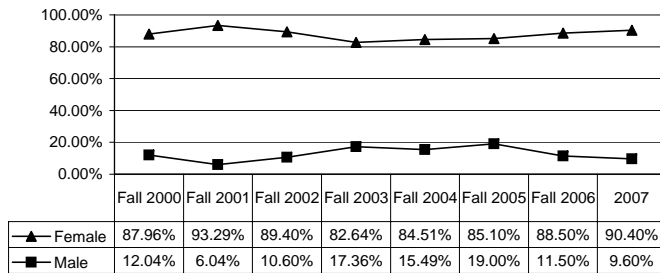
**Percentages for Overall Gender Distribution:
Fall 1999 - Fall 2006**



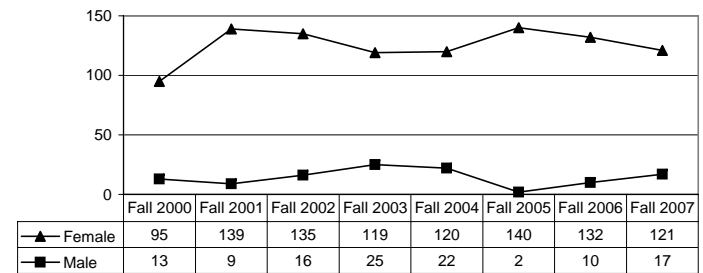
**Numbers for Overall Gender Distribution:
Fall 1998 - Fall 2006**



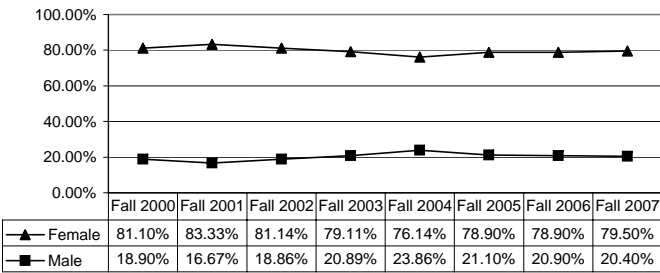
**Percentages for Freshmen Gender Distribution:
Fall 1999 - Fall 2006**



**Numbers for Freshmen Gender Distribution:
Fall 1998 - Fall 2006**



**Percentages for Transfer Gender Distribution:
Fall 1998 - Fall 2006**



**Numbers for Transfer Gender Distribution:
Fall 1998 - Fall 2005**

